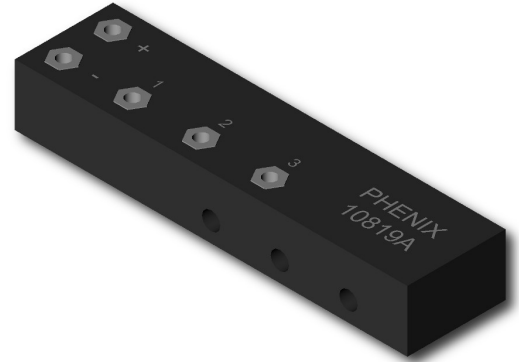


**Linear Analog Output AC Current Sensor**

**Description**

Model 10819 Linear Current Sensor outputs an analog voltage proportional to the amperage of the sensed AC line. Single phase and three phase versions are available. Three core package can operate as three independent outputs.

Operating voltage, output voltage, and sensing range is customizable upon special order. Please call for variations.



**Features**

- Linear Output
- Single or Three Phase Versions
- Wide sensing range
- Outputs are isolated from monitored lines
- Encapsulated to prevent environmental and physical damage

**Specifications**

	Min	Max
Operating DC Voltage	12	24
Output Current		20 mA
Current Sensing Range (Amps)	0	10
	0	25
Phase	1 or 3	
Wire Size (inch)		03/16/11

**Applications**

- Pumping
- Irrigation
- Conveyors
- Loaders
- Fans and Blowers
- Ovens and Heaters
- Waste Management
- Material Handling
- Industrial Process Control