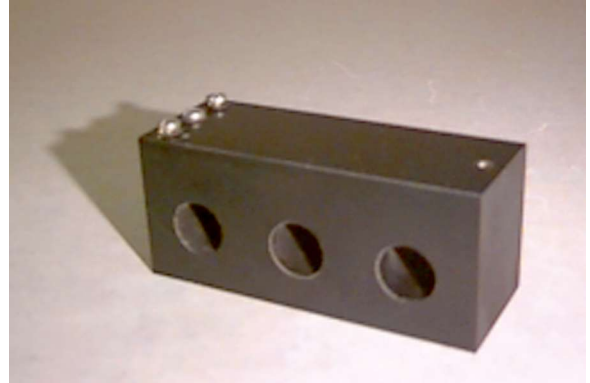


#### DESCRIPTION

Model 4119 is a 250 A, 3 phase current sensor. This block provides a highly linear output. The output sums each leg of the sensor and decreases from 3.5V by 3mV per Amp per leg. Recommended for current monitoring.



#### SPECIFICATIONS

|                          |                                    |
|--------------------------|------------------------------------|
| Sensing Ranges           | 0-25A, 0-50A, 0-100A, 0-250A       |
| Sensor Frequency Range   | 50-60 Hz                           |
| Output                   | 3mV/A                              |
| Response Times           | 10ms                               |
| Temperature Range        | 0-70°C                             |
| Maximum Wire Size        | 5/8"                               |
| Dimensions ( L x W x H ) | 4 x 1.5 x 1.75 inches              |
| Connections              | 6-32 Screw Terminals (3)           |
| Operating Voltage        | 5VDC                               |
| Output Type              | Comparator output with 3KΩ pull up |
| Output Rating            | 10mA @ 5VDC                        |
| Operating Current        | 3mA                                |

#### ORDERING

| Series           | # of Sensors | Sensing Ranges |
|------------------|--------------|----------------|
| 4119 C → 3 cores | 1            | → 0-25A        |
|                  | 2            | → 0-50A        |
|                  | 3            | → 0-100A       |
|                  | 4            | → 0-250A       |

#### FEATURES

- Encapsulated to prevent environmental and physical damage
- Solid-state
- Accommodate wires up to 5/8 inch
- Currents up to 250A
- Outputs are isolated from monitored lines

#### APPLICATIONS

- Current Monitoring
- Protects motors
- Increases Motor Life
- Pumping
- Irrigation
- Conveyors
- Loaders
- Fans and Blowers
- Ovens and Heaters
- Waste Management
- Material Handling
- Industrial Process Control