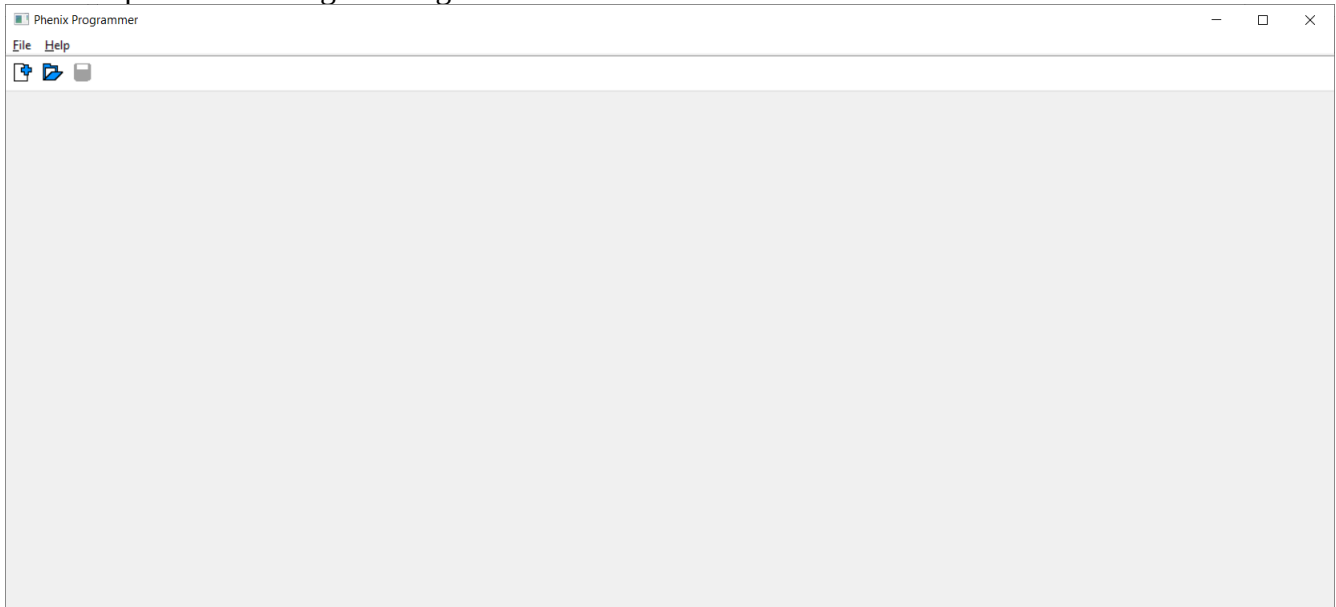
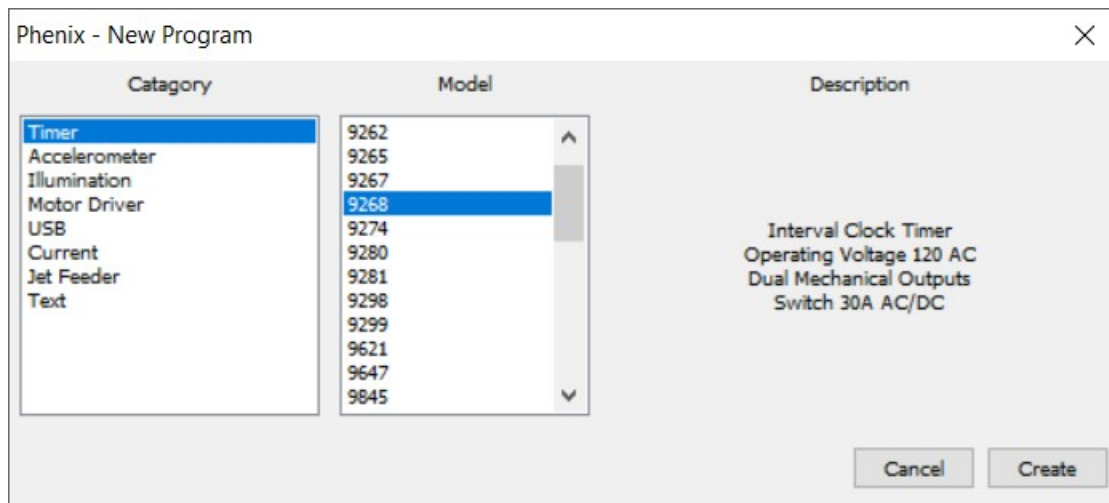


Phenix Programming Software – 9268

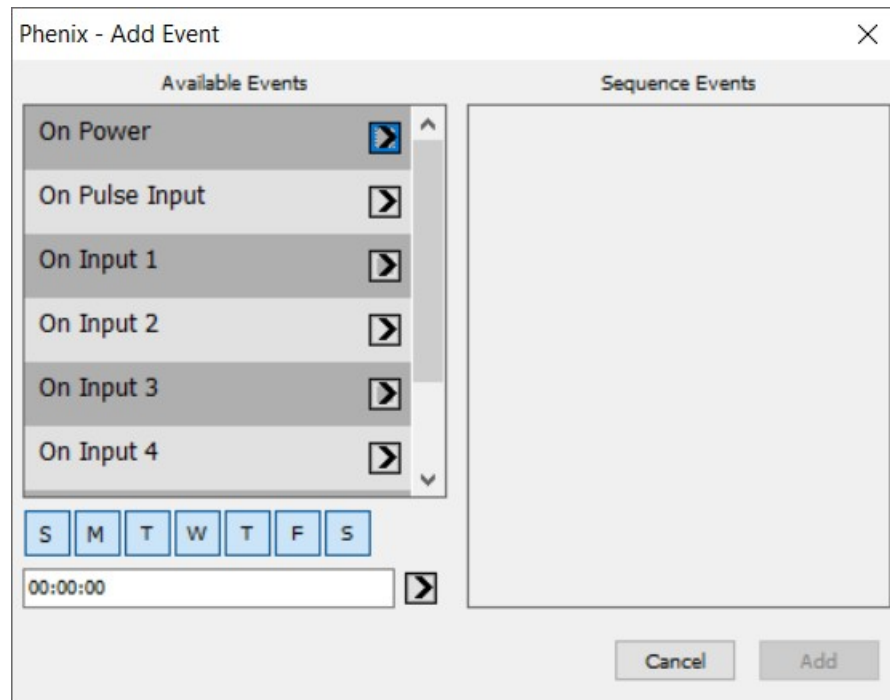
- Download Phenix Software at:
http://www.phenixcontrols.com/Software/Programmer_Software/
- Open Phenix Programming Software.



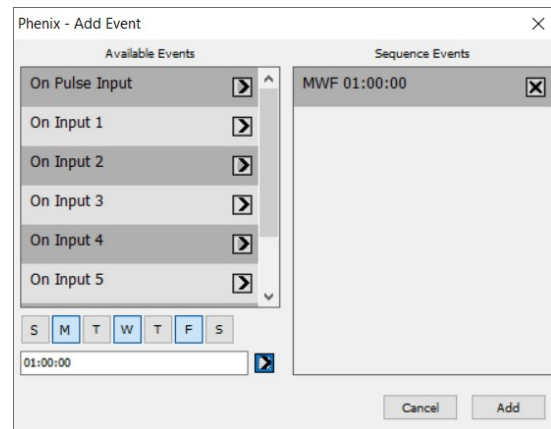
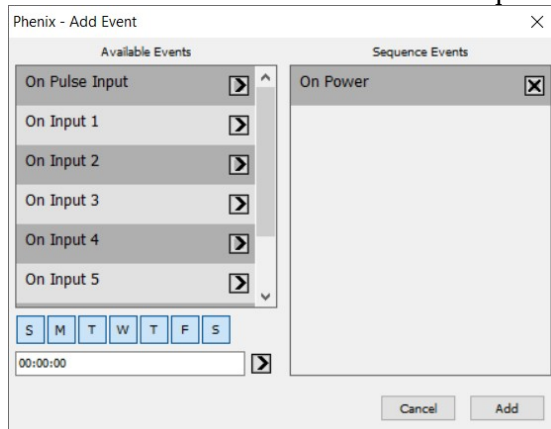
- Select Create A New Program
- Select Timer Category and Model 9268
- Click Create



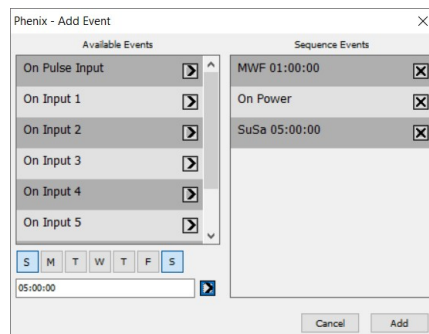
- Add Event Screen will show



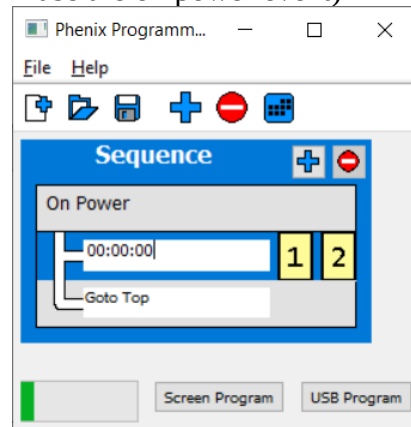
- The Model 9268 can only have on power up or days and times of the week. So select either “On Power” or add days and times of the week. The arrow to the right of each event will add it to the list of events that will start the sequence.



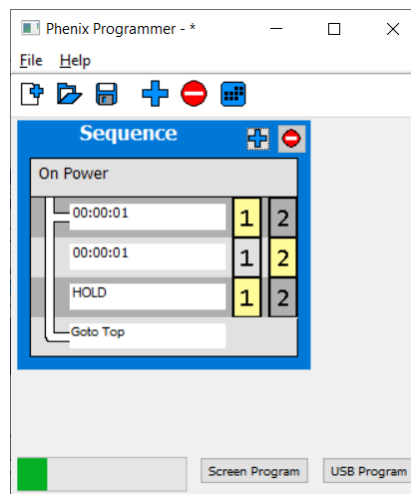
- Multiple events can be added to start a single sequence if desired.



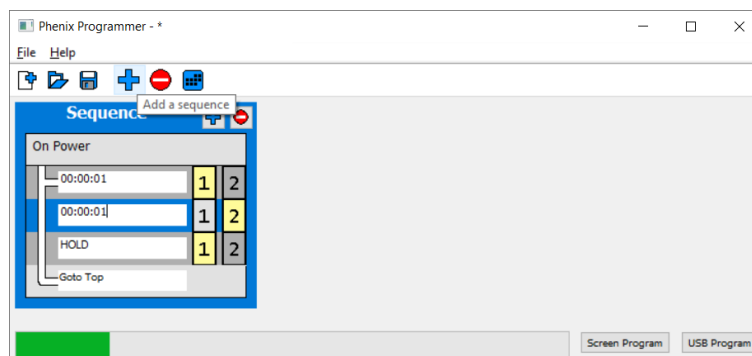
- Click Add (This example will use the on power event)



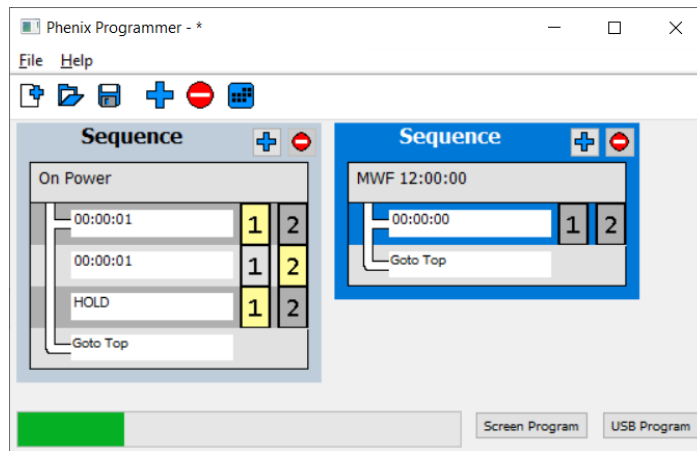
- This is where you add to the sequence and select what output will be on. The blue “+” next to sequence will add steps to the sequence. Edit the text boxes for the time for each step and click numbers that correspond to the output you want to use. Powering on starts this sequence example:



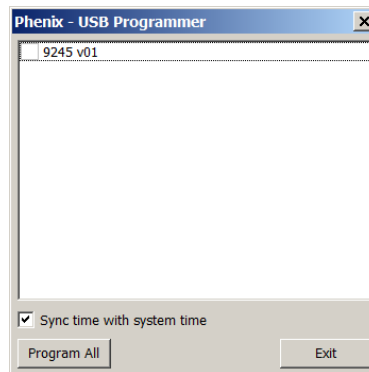
- This turns each output on for one second in sequence, then holds output 1 on until a power reset or another event triggers. (HOLD is zeros “00:00:00”)
- You can add event and other sequences with the larger “+” next to the New, Open and Save images.



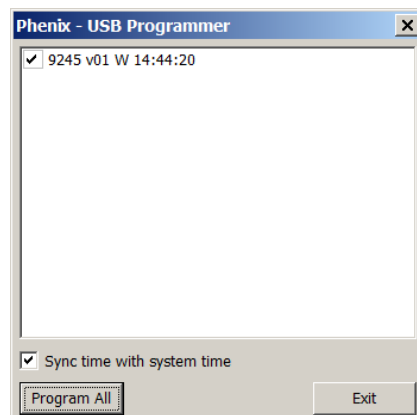
- Adding a sequence that on Monday Wednesday and Friday at noon turns the relays off looks like:



- To program, plug in the 9245 USB remote and click USB Program in the bottom right.



- The 9245 should appear in the text box.
- Click Program All



- The program, the day of the week and the time will be programmed to the 9245.
- The 9245 can now be unplugged and used to infrared transmit the program to the 9268. See the drawing of the 9268 for the location of the IR programming input. Make sure to aim the 9245 at the 9268 IR programming input. The 9245 should be close to, about half an inch, from the IR programming input on the 9268. Press the button on the 9245 to IR program and the LED on 9245 and the 9268 both will flash to indicate programming.
- See the software section of the website for more help in creating programs:
<http://www.phenixcontrols.com/Software/>